




Toxoplasma antibodies, *Toxoplasma*-DNA and Antibodies of HCV and HIV



in Patients with Hemodialysis in Beni-Suef, Egypt

Hala M. El-Askary¹, Ayman A. El-Badry², Raafat M. Shaapan^{3*} , Mousa A.M. Ismail⁴, Marwa A. Ghieth¹, Mostafa S. Sheemy⁵, Ahmed Y. Ismaeel⁶, Shimaa A Senosy⁷ and Mona I. Ali¹

¹Departments of Medical Parasitology, Faculty of Medicine, Beni-Suef University, Beni-Suef, Egypt.

²Department of Microbiology, College of Medicine, Imam Abdulrahman Bin Faisal University, Dammam, Saudi Arabia. & Medical Parasitology, Faculty of Medicine, Cairo University, Cairo, Egypt

²Medical Parasitology Department, Faculty of Medicine, Cairo University, Cairo, Egypt

³Department of Zoonotic Diseases, National Research Centre, El-Tahrir Street, Dokki, Giza, Egypt.

⁴Medical Parasitology, Kasr Al-Ainy, Faculty of Medicine, Cairo University, Egypt

⁵Medical Microbiology and Immunology, Faculty of Medicine, Beni-Suef University, Beni-Suef, Egypt.

⁶Internal Medicine, Faculty of Medicine, Beni-Suef University, Beni-Suef, Egypt.

⁷Public Health and community Medicine, Faculty of Medicine, Beni-Suef University, Beni-Suef, Egypt

Abstract

GLOBALLY, *Toxoplasma gondii* (*T. gondii*) infections are frequent in both humans and animals, and toxoplasmosis is among the most prevalent parasitic zoonoses. Hemodialysis (HD) is a potentiating factor for impaired cellular immunity, making patients more susceptible to the opportunistic pathogen *Toxoplasma gondii* and blood-transmitted viruses. To identify the sero-occurrence of Toxoplasmosis, HCV and HIV and the molecular-occurrence of *Toxoplasma* within the sera of patients undergoing HD. A single serum sample was collected from 75 HD patients. Serum samples were searched for anti-*Toxoplasma* IgG and IgM, HCV and HIV antibodies (Abs) using ELISA and *Toxoplasma* DNA using PCR assay. The results of this study indicated that *Toxoplasma* was detected by IgG, IgM and PCR (61.3%, 22.7%, and 1.3%, respectively). HCV Abs was detected in 14.6% of cases, co-infection with *Toxoplasma* (Abs) in 8 cases (10.6%), while HIV Ab wasn't detected in any patients by ELISA. This investigation concluded that seropositive *Toxoplasma* and HCV are frequent in HD patients with a very low prevalence of *Toxoplasma* DNA and regular checks for *Toxoplasma* and HCV seroconversion is desirable in these patients. A two-steps diagnostic immune-molecular approach in one single serum sample for detection of *Toxoplasma*-DNA in seropositive patients can rule out acute or active toxoplasmosis and avoid unnecessary treatment.

Keywords: *Toxoplasma gondii*, Ig G, Ig M, PCR, ELISA, HCV, HIV.

Introduction

Toxoplasma gondii is a parasitic obligate intracellular protozoan parasite that causes zoonotic infections all over the world. It has a usual clonal population of three virulent human and animal genotypes; I, II and III [1, 2]. *T. gondii* has various

intermediate hosts: humans, livestock animals (sheep, goat, camels, cattle and buffaloes), other warm-blooded animals [3-6] and cats act as the definitive (final) host [7]. Patients with immunocompromising illnesses, such as HIV/AIDS, cancer, and organ transplant recipients who have a compromised immune system, are at risk of dying

*Corresponding author: Raafat M. Shaapan, E-mail: rshaapan2005@yahoo.com, Tel.: 002 01005280571

(Received 24/04/2024, accepted 18/05/2024)

DOI: 10.21608/EJVS.2024.284997.2034

©2025 National Information and Documentation Center (NIDOC)

from toxoplasmosis [8, 9]. The impaired cell-mediated immunity because of lymphopenia and dysfunction of the cluster of differentiation 4 (CD4+) T cells, where the counts diminished to <200 cells/ μ l significantly linked to high Toxoplasmosis rate [10]. The majority of *Toxoplasma* infections are asymptomatic in the acute phase, except for cervical lymphadenopathy [11]. As a result, clinical signs alone cannot be used to diagnose toxoplasmosis in healthy blood donors; further parasitological or serological and immunological tests must be used to confirm the diagnosis [12].

Patients undergoing hemodialysis (HD) and suffering chronic kidney diseases (CKDs) are more susceptible to parasitic infections especially toxoplasmosis due to impaired defense immune mechanisms [13]. Renal failure impairs cellular immunity and causes deficient in immunity as lymphopenia [14, 15]. Cellular immunity is essential for defense against intracellular protozoa and viruses infected cells [16]. The prevalence of *Toxoplasma* low avidity antibodies in patient serum raises the possibility of toxoplasmosis transmission to seronegative recipients via blood transfusion so, *Toxoplasma* screening is important before donation of blood [17]. When hemodialysis patients are compared to healthy controls, they have a significant seroprevalence of *T. gondii* infection. As a result, regular screening programmes for *T. gondii* infection are recommended as a normal clinical treatment for hemodialysis patients [18, 19]. During Hemodialysis (HD), the association with the artificial membrane during dialysis promotes self-death of T cells, resulting in the downturn of monocytes and neutrophils phagocytic extent plus producing unusual cytokines that promotes inflammations [20, 21].

The hepatitis C virus (HCV) and human immunodeficiency virus (HIV) are overlapping viruses sharing routes of transmission [22, 23]. In acute viremia of HCV, NK cells are activated resulting in interferon-gamma (IFN- γ) release affecting virus-infected hepatocyte promotes killing cytotoxicity [24]. HIV attacks **CD4+ T cells and monocytes** causing a diminished CD4+ count that sooner makes patients immunocompromised [25]. The investigated prevalence of antibodies against *Toxoplasma gondii* was associated with the presence of hepatitis B virus (HBV), hepatitis C virus (HCV) and human immunodeficiency virus (HIV) infections in pregnant women [26]. *Toxoplasma gondii* infections can cause major difficulties in HIV-positive pregnant women, including miscarriage, stillbirth, and birth abnormalities, as well as promote or exacerbate HCV and HIV vertical transmission from mother to child [27]. Toxoplasmosis is a serious public health concern among HIV-positive people because it causes physical and psychological difficulties due to the loss of CD4 cells, decreased cytokine production,

and impaired cytotoxic T-lymphocyte activity, which leads to the reactivation of latent infection [28].

It is crucial to evaluate Toxoplasmosis among this category of patients whose immune state is impaired by the chronicity of the renal disease and are susceptible to complications of *Toxoplasma* or reactivation of the previous infection. Thus, *Toxoplasma* antibodies and DNA products were used to detect infection. In addition to detection of both HCV and HIV antibodies.

Material and Methods

Study population and design

Cross-sectional, hospital-based study was performed including 75 patients undergoing regular hemodialysis at Hemodialysis Center at Beni-Suef University. This research was held from August to December 2022. Patients' characteristics demographic data were recorded. Consents were taken before sample collection from patients.

Samples Collection and processing

Blood samples from the population undergoing haemodialysis were collected. Sera were separated then divided into aliquots and kept frozen at -20 °C for the subsequent assays.

Anti-Toxoplasma IgG and Ig M using ELISA

DRG *Toxoplasma* IgG ELISA EIA-1798 and DRG *Toxoplasma* IgM ELISA EIA-1799 kits (DRG Instruments GmbH, Germany) were used to detect anti-Toxoplasma IgG and IgM in sera of patients. Procedures were done as mentioned by kits and according to the method described by Barakat *et al.* [29].

Detection of HCV and HIV antibodies

HCV and HIV antibodies were detected using HCV ELISA (PRECHEK HCV ELISA test kit, Korea) and HIV ELISA (PRECHEK HIV ELISA test kit, Korea). Assay and interpretation were done as mentioned by the kits' manual according to procedures of Elfadaly *et al.* [30].

Molecular detection of Toxoplasma DNA

Quick-gDNA™ Miniprep Kit was used for genomic DNA extraction from serum samples as instructed by kits [31]. The extracted DNA products were amplified using *Toxoplasma gondii* 529 bp-RE (repetitive elements) primers and PCR reaction conditions that were described by Shaapan *et al.* [32].

Statistical analysis

Collected data were arranged and entered using Statistical Package for Social Science, (SPSS) software version 26. Descriptive data were computerized for categorical data using frequency. Quantitative data were expressed by the mean and

standard deviation (mean \pm SD) according to the procedures of Elfadaly *et al.* [33].

Results

Anti-*Toxoplasma* IgG and IgM were detected in 61.3% and 22.7%, respectively in patients undergoing HD. Among seropositive patients, *Toxoplasma* DNA was detected in only one case (Fig. 1).

Antibodies for HCV Ab was detected in 14.6% of cases, while HIV Ab wasn't detected in any patients by ELISA (Table 1) and the Mean of Ig G and Ig M titers were 1.71 and 1.38, respectively (Table 2). The majority of patients were female 62.6%, mean age was 50.73 \pm 12.85 (Table 3).

Discussion

Toxoplasmosis is frequently spread among variable hosts. The two major highly vulnerable populations to *Toxoplasma* infection, the fetus and the immunocompromised people including those who are suffering from CKDs [34].

In the current study, *Toxoplasma* IgG (61.3%) and IgM (22.7%) were highly prevalent in the serum of patients undergoing HD. In spite high seroprevalence of toxoplasmosis among patients undergoing HD, *Toxoplasma* DNA was detected by PCR in only one IgG positive case (1.3%, respectively). In *Toxoplasma* reactivation, there is not always changes in the level of antibodies and serodiagnosis of active *Toxoplasma* infection is unreliable. This only PCR positive case indicates active infection. Where IgG positive referring to an old infection and IgM was negative supposing that, at the time of the study, it was too recent to detect the acquired new infection by IgM since it takes one week or more by IgM to appear in the blood. Its peak reached by one to three months later or reactivation of *Toxoplasma* infection where IgM may not appear [35, 36].

Undetectable PCR products among the other samples despite the positive IgM antibodies' levels can be explained by the presence of previous exposure and patients were immune as IgM remained elevated in chronic *Toxoplasma* infection. In addition, the possibility of false-positive IgM antibodies cannot be ruled out. In a similar study, Nahnoush *et al.* [37] reported anti-*Toxoplasma* IgG and IgM, and *Toxoplasma* DNA in 60%, 14.6%, 2%, respectively among HD patients. Nominating to the high-risk meeting these patients with exposure to active toxoplasmosis. They mentioned that DNA product for *Toxoplasma* was detected in two cases with seropositive IgG and one case with seropositive IgM. In contrast, Saki *et al.* [38], reported four cases of *Toxoplasma* positive DNA with only IgM positivity in the four cases.

Our results revealed that HCV antibody was detected in 14.6% of HD patients, co-positivity of *Toxoplasma* and HCV antibodies was reported in 8 cases (10.6%) while HIV antibody wasn't detected in all patients by ELISA. Coinfection of *Toxoplasma* and HCV was reported by other studies [39, 40, 41, 42]. Both the protozoan *Toxoplasma* and HCV need strong cellular immunity for better prognosis [43], a condition lost within HD patients with CKDs, making these patients more vulnerable to a bad outcome.

The problem meeting patients with hemodialysis is the shortage of essential cells sharing in cellular immunity, T cells, NK, macrophages, a situation that can't be improved with hemodialysis [44]. On the other side, we have a resistant intracellular protozoan that needs strong cellular immunity for defense. A bit of bad luck meets hemodialysis patients exposed to Toxoplasmosis and co-infected with HCV.

Different studies reported high seropositive anti-*Toxoplasma* IgG antibodies, 80% [45], 76.5% [46], 60% [27], 56.7% [47] and 33.3% [1] in patients undergoing hemodialysis. Differences in levels of antibodies in between hemodialytic populations are related to differences in the environmental conditions that favours the spread of infection in some areas and personal factors of consumption of contaminated food.

HIV in patients with HD is proportional morbidities, even it shortens the survival of HD patients and rapid reaches end-stage KDs [48]. It is a risk agent for death in HD [49]. Our studied population were negative for HIV Ab by ELISA. Regardless, hemodialysis needs constant long visits/weeks of staying at hospitals and medical centres, in some-extension the need for a blood transfusion by these patients increases the risk of exposure to blood transmitted viruses and protozoa.

Conclusions

Based on our results, in hemodialysis patients we recommend a two-step diagnostic approach in one serum sample from the single patient visit for detection of *Toxoplasma*-DNA in seropositive patients, can rule out acute or active toxoplasmosis and sero-negative patients to rule-in acute toxoplasmosis also avoid unnecessary treatment and development of drug resistance. Debited diseases especially renal failure and HD promotes subsidence of cell-mediated immunity that is vital in the defense of the intracellular *Toxoplasma*, virus HCV and HIV. Hence, *Toxoplasma* and HCV sero-conversion should be regularly investigated.

Acknowledgment

Our pleasure to the Scientific Research Developing Unit, Beni-Suef University for financing this research given to author El-Askary HM. We are thankful to the Diagnostic & Research Unit of

Parasitic Diseases; the lab of Medical Microbiology and Immunology, Beni-Suef University; and the Lab of Molecular Medical Parasitology (LMMP), Kasr Al-Ainy, Cairo University for the fulfillment of the methodology of the study. In addition to the Hemodialysis Center at Beni-Suef University for allowing the performance of the study.

Conflicts of interest

The authors declare that they have no conflict of interest or financial or otherwise.

Funding statement

The research did not receive any financial support from any institute

Ethical considerations

Patients preceded taking serum samples and collection of data where the Medical Research Ethics Committee-National Research Centre, Egypt under registration number 1-2, approved the work ethically /0-2-1.2022

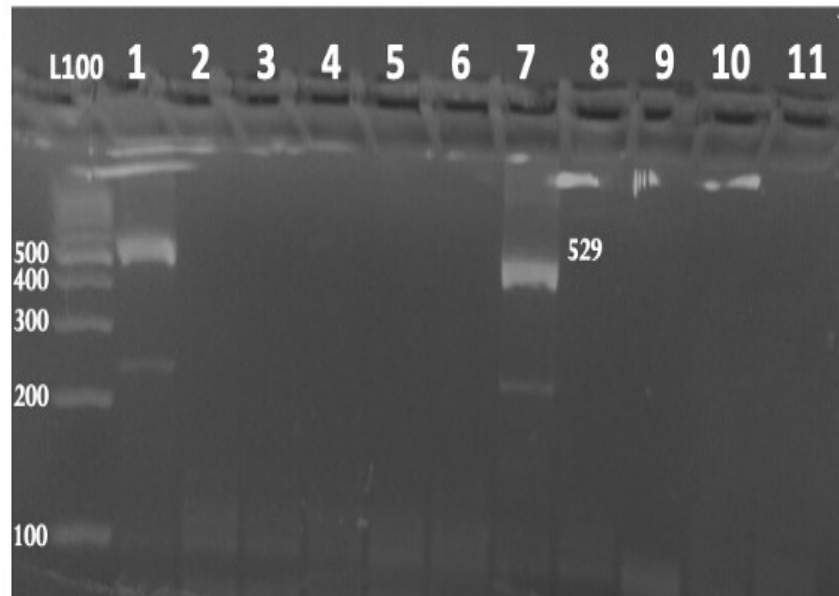


Fig. 1 Stained agarose gel exhibiting the PCR product triggering *Toxoplasma gondii* 529 bp-RE; Footnote: L100 (ladder 100bp), lane 1: positive control, lane 2: negative control, lanes 3-6 & 8-11: negative samples, lane 7: positive sample (529 bp).

TABLE 1. Toxoplasmosis by immune-molecular assays, HCV and HIV serology

	<i>Toxoplasma gondii</i>				HCV ab	HIV ab
	+ve Ig G	+ve Ig M	+ve Ig G +ve Ig M	+ve PCR	+ve	+ve
Positive	46 (61.3%)	17 (22.7%)	15 (20%)	1 (1.3%)	11 (14.6%)	0 (0%)
Negative	29 (38.6%)	58 (77.3%)	60 (80%)	74 (98.6%)	64 (85.3%)	75 (100%)

TABLE 2. Mean of Ig G and Ig M titers

	Mean	±SD
Ig G titer	1.71	.619
Ig M titer	1.38	.309
The Studied population age	50.73	12.85

TABLE 3. Distribution of age and sex among the studied population

Variables		n (%)
Sex	Male	28 (37.3)
	Female	47 (62.6)
Age group (years old)		
	>30-40	2 (2.7)
	>40-50	12 (16)
	>50-60	16 (21.3)
	>60-70	20 (26.7)
	>70-80	25 (33.3)

References

1. Elfadaly, H.A., Hassanain, N.A., Shaapan, R.M., Barakat, A.M. and Abdelrahman, K.A. Molecular detection and genotyping of *Toxoplasma gondii* from Egyptian isolates. *Asian Journal of Epidemiology*, **10** (1), 37-44 (2017). DOI:10.3923/aje.2017.37.44
2. Elfadaly, H.A., Hassanain, M.A., Shaapan, R.M., Barakat, A.M. and Toaleb, N.I. Serological and hormonal assays of murine materno-fetal *Toxoplasma gondii* infection with emphasis on virulent strains. *World Journal of Medical Science*, **7**(4), 248-254 (2012). DOI:idosi.org/wjms/7(4)12/7.pdf.
3. Shaapan, R.M., Hassanain, M.A. and Khalil, F.A.M. Modified agglutination test for serologic survey of *Toxoplasma gondii* infection in goats and water buffaloes in Egypt. *Research Journal of Parasitology*, **5**, 13-17 (2010). DOI: 10.3923/jp.2010.13.17
4. Shaapan, R.M., Toaleb, N.I. and Abdel-Rahman, E.H. Detection of *Toxoplasma gondii*-specific immunoglobulin (IgG) antibodies in meat juice of beef. *Iraqi Journal of Veterinary Sciences*, **35**(2), 319-324 (2021). DOI:10.33899/ijvs.2020.126829.1390
5. Zeedan, G.S., Abdalhamed, A.M., Shaapan, R.M. and El-Namaky, A.H. Rapid diagnosis of *Toxoplasma gondii* using loop-mediated isothermal amplification assay in camels and small ruminants. *Beni-Suef University Journal of Basic and Applied Sciences*, **11**(1), 1-10 (2022). DOI:10.1186/s43088-021-00184-x
6. Shaapan, R.M., Kandil, O.M. and Nassar, S.A. Comparison of PCR and Serologic Survey for Diagnosis of Toxoplasmosis in Sheep. *Research Journal of Parasitology*. **10**(2), 66-72 (2015). DOI:10.3923/jp.2015.66.72)
7. Shaapan, R.M., Toaleb, N.I. and Abdel-Rahman, E.H. Significance of a common 65 kDa antigen in the experimental fasciolosis and toxoplasmosis. *Journal of Parasitic Diseases*, **39**(3), 50-556 (2015). DOI:10.1007/s1263901303942)
8. Taman, A. and S. Alhuseiny. Exposure to toxoplasmosis among the Egyptian population: A systematic review. *Parasitologists United Journal* **13**(1), 1-10 (2020). DOI:10.21608/puj.2020.20986.1058
9. Shaapan, R.M., Al-Abodi, H.R., Alanazi, A.D., Abdel-Shafy, S., Rashidipour, M., Shater, A.F. and Mahmoudvand, H. *Myrtus communis* Essential Oil; Anti-Parasitic Effects and Induction of the Innate Immune System in Mice with *Toxoplasma gondii* Infection. *Molecules*, **26**(4), 819 (2021). DOI:10.3390/molecules26040819
10. Aboelsoued, D., Toaleb N.I., Ibrahim, S., Shaapan, R.M. and Abdel Megeed, K.N. A *Cryptosporidium parvum* vaccine candidate effect on immunohistochemical profiling of CD4⁺, CD8⁺, Caspase-3 and NF-κB in mice. *BMC Veterinary Research*, **19**, (1), 1-11 (2023). DOI:10.1186/s12917-023-03699-w
11. Hassanain, N.A., Hassanain, M.A., Ahmed, W.M., Shaapan, R. M. Barakat, A.M. and El-Fadaly, H.A. Public Health Importance of Foodborne Pathogens. *World Journal of Medical Sciences*, **9** (4), 208-222 (2013). DOI:10.5829/idosi.wjms.2013.9.4.8177.
12. Hassanain, M.A., Shaapan, R.M. and Khalil, F.A.M. Sero-epidemiological value of some hydatid cyst antigen in diagnosis of human cystic echinococcosis. *Journal of Parasitic Diseases*, **40**(1), 52-56 (2016). DOI:10.1007/s12639-014-0443-5
13. Shehata, A.I., Hassanein, F. and Abdul-Ghani, R. Opportunistic parasitosis among Egyptian hemodialysis patients in relation to CD4+ T-cell counts: a comparative study. *BMC Infectious Diseases*, **19**(1), 480-489 (2019). DOI:10.1186/s12879-019-4110-4
14. Vaziri, N.D., Pahl, M.V., Crum, A. and Norris, K. Effect of uremia on structure and function of immune system. *Journal of Renal Nutrition*, **22**(1), 149-156 (2012). DOI:10.1053/j.jrn.2011.10.020

15. Hassanain, M.A., Hassanain, N.A. and Shaapan, R.M. A model of pulmonary toxoplasmosis in rats as potential impact on immune deficient diseases. *Comparative Clinical Pathology*, **27**,1501–1507 (2018). DOI:10.1007/s00580-018-2764-8
16. Mahmoud, M.A., Ghazy, A.A. and Shaapan, R.M. Review of diagnostic procedures and control of some viral diseases causing abortion and infertility in small ruminants in Egypt. *Iraqi Journal of Veterinary*, **35**(3), 513–521 (2021). DOI:10.33899/ijvs.2020.127114.1461
17. Abd El Wahab, W.M., Shaapan, R.M., Hassanain, M.A., Elfadaly, H.A. and Hamdy, D.A. *Toxoplasma gondii* infection and associated sociodemographic and behavioral risk factors among blood donors. *Asian Journal of Epidemiology*, **11** (2), 52-58 (2018). DOI:10.3923/aje.2018.52.58
18. Hassanain, N.A., Shaapan, R.M. and Hassanain, M.A. Associated Antenatal Health Risk Factors with Incidence of Toxoplasmosis in Egyptian Pregnant Women. *Pakistan Journal of Biological Sciences: PJBS*, **21**(9), 463-468 (2018). DOI:10.3923/PJBS.2018.463.468
19. Soltani, S., Kahvaz, M.S., Soltani, S. Maghsoudi, F. and Foroutan, M. Seroprevalence and associated risk factors of *Toxoplasma gondii* infection in patients undergoing hemodialysis and healthy group. *BMC Research Notes*, **13**(1), 1-5 (2020). DOI:10.1186/s13104-020-05396-5
20. Muniz-Junqueira, M.I., Lopes, C.B., Magalhães, C.A.M., Schleicher, C.C. and Veiga, J.P.R. Acute and chronic influence of hemodialysis according to the membrane used on phagocytic function of neutrophils and monocytes and pro-inflammatory cytokines production in chronic renal failure patients. *Life Sciences*, **77**(25), 3141-3155 (2005). DOI:10.1016/j.lfs.2005.03.034
21. Borges, A., Borges, M. Fernandes, J. Nascimento, H. Sameiro-Faria, M. Miranda, V. Reis, F. Belo, L. Costa, E. and Santos-Silva, A. Apoptosis of Peripheral CD4+ T-Lymphocytes in End-Stage Renal Disease Patients under Hemodialysis and rhEPO Therapies. *Renal Failure*, **33**(2), 138-143 (2011). DOI:10.3109/0886022X.2011.553300
22. Terilli, R.R. and Cox, A.L. Immunity and hepatitis C: a review. *Current HIV/AIDS Reports*, **10**(1), 51–58 (2013). DOI:10.1007/s11904-012-0146-4
23. Zeedan, G.S., Hassanain, M.A. and Shaapan, R.M. Isolation of Parapoxviruses from Skin Lesion of Man and Animals in Middle Egypt. *Global Veterinaria*, **12** (1), 19-25 (2014). DOI: 10.5829/idosi.gv.2014.12.01.81156.
24. Żeromski, J., Mozer-Lisewska, I. Kaczmarek, M. Kowala-Piaskowska, A. and Sikora, J. NK cells prevalence, subsets and function in viral hepatitis C. *Archivum immunologiae et therapiae experimentalis*, **59**(6),449-455(2011). DOI:10.1007/s00005-011-0145-y
25. Ali, M.I., Ismail, M.A.M., Abd-Allah, G.A., Abdel-Latif, M., Shaapan, R.M., Salah, H., Abdel Gawad, S.S. and Abu-Sarea, E.Y. Toxoplasmosis in Schizophrenic Patients: Immune-diagnosis and Serum Dopamine Level. *Pakistan Journal of Biological Sciences*, **23**(9), 1131-1137 (2020). DOI:10.3923/PJBS.2020.1131.1137
26. Gutiérrez-Zufiaurre, N., Sánchez-Hernández, J., Muñoz, S., Marín, R., Delgado, N., Muñoz-Bellido, J.L. and García-Rodríguez, J.Á. Seroprevalencia de anticuerpos frente a *Treponema pallidum*, *Toxoplasma gondii*, virus de la rubéola, virus de la hepatitis B y C y VIH en mujeres gestantes. *Enfermedades Infecciosas Y Microbiología Clínica*, **22**(9), 512-516 (2004) DOI:10.1016/S0213-005X(04)73152-3.
27. Hassan, S.E., Shaapan, R.M., Ghazy, A.A. and Abdel-Rahman, E.H. Evaluation of Purified Horse Derived Antigen in the Diagnosis of Human Toxoplasmosis. *Global Veterinaria*, **9** (5), 630-634 (2012). DOI:idosi.org/gv/GV9(5)12/20.pdf.
28. Basavaraju, A. Toxoplasmosis in HIV infection: an overview. *Tropical Parasitology*, **6**(2), 129 (2016). DOI:10.4103%2F2229-5070.190817
29. Barakat, A.M., Salem, L.M., El-Newishy, A.M., Shaapan, R.M. and El-Mahllawy, E.K. Zoonotic chicken toxoplasmosis in some Egyptians governorates. *Pakistan Journal of Biological Sciences*, **15** (17), 821-826. (2012). DOI:10.3923/pjbs.2012.821.826
30. Elfadaly, H.A., Shaapan, R. M., Barakat, A.M., Hassanain, N.A. and Maher, A. The Accuracy of Developed Peroxidase *T. gondii* IgG ELISA Plates for Evaluating Toxoplasmosis in Sheep. *International Journal of Veterinary Science*, **12**(2), 236-241 (2023). DOI:10.47278/journal.ijvs/2022.174
31. Hassanain, M.A., Khalil, F.A.M., AbdEl-Razik, K.A. and Shaapan, R.M. Prevalence and Molecular Discrimination of *Cryptosporidium parvum* in Calves in Behira Provinces, Egypt. *Research Journal of Parasitology*, **6**, 101-108 (2011). DOI:jp.2011.101.108).
32. Shaapan, R.M., Abo-ElMaaty, A. M. Abd El-Razik, K. A. and Abd El-Hafez, S. M. PCR and Serological Assays for Detection of *T. gondii* Infection in Sport Horses in Cairo, Egypt. *Asian Journal of Animal and Veterinary Advances*, **7**(2), 158-165 (2012). DOI:org/ajava.2012.158.165.
33. Hassanain, N.A., Shehata, A.Z., Mokhtar, M.M., Shaapan, R.M., Hassanain, M.A. and Samy Zaky, S. Comparison Between Insecticidal Activity of *Lantana camara* Extract and its Synthesized Nanoparticles Against *Anopheline* mosquitoes *Pakistan Journal of*

- Biological Sciences*, **22**(7), 327-334 (2019). DOI:10.3923/PJBS.2019.327.334
34. Elfadaly, H.A., Hassanain, M.A., Shaapan, R.M., Hassanain, N.A. and Barakat, A.M. Corticosteroids Opportunist Higher *Toxoplasma gondii* Brain Cysts in Latent Infected Mice. *International Journal of Zoological Research*, **11**(4), 169-176 (2015). DOI:10.3923/ijzr.2015.169.176
 35. Wang, Z.D., Liu, H.H., Ma, Z.X., Ma, H.Y., Li, Z.Y., Yang, Z.B., Zhu, X.Q., Xu, B., Wei, F. and Liu, Q. *Toxoplasma gondii* infection in immunocompromised patients: a systematic review and meta-analysis. *Frontiers in Microbiology*, **8**, 238621. (2017). DOI:10.3389/fmicb.2017.00389
 36. Hassanain, M.A., Elfadaly, H.A., Shaapan, R.M., Hassanain, N.A. and Barakat, A.M. Biological Assay of *Toxoplasma gondii* Egyptian Mutton Isolates. *International Journal of Zoological Research*, **7**, 330-337 (2011). DOI: jzr.2011.330.337.
 37. Nahnoush, R.K., Youssif, E.M. and Hassanin, O.M. Detection of toxoplasmosis in hemodialysis Egyptian patients using serological and molecular techniques. *Australian Journal of Basic and Applied Sciences*, **10**(6), 197-201 (2016). DOI:ajbas/2016/March/197-201.pdf
 38. Saki, J., Khademvatan, S., Soltani, S. and Shahbazian, H. Detection of toxoplasmosis in patients with end-stage renal disease by enzyme-linked immunosorbent assay and polymerase chain reaction methods. *Parasitology Research*, **112**(1), 163-168 (2013). DOI:10.1007/s00436-012-3120-6
 39. El-Nahas, H.A., El-Tantawy, N.L., Farag, R.E. and Alsalem, A.M. *Toxoplasma gondii* infection among chronic hepatitis C patients: a case-control study. *Asian Pacific Journal of Tropical Medicine*, **7**(8), 589-593 (2014). DOI:10.1016/S1995-7645(14)60100-0
 40. El-Henawy, A.A. Abdel-Razik, A., Zakaria, S., Elhammady, D., Saady, N. and Azab, M.S. Is toxoplasmosis a potential risk factor for liver cirrhosis?. *Asian Pacific Journal of Tropical Medicine*, **8**(10), 784-791 (2015). DOI:10.1016/j.apjtm.2015.09.003
 41. El-Sayed, N.M., Ramadan, M.E. and Ramadan, M.E. *Toxoplasma gondii* infection and chronic liver diseases: evidence of an association. *Tropical Medicine and Infectious Disease*, **1**(1), 7 (2016). DOI:10.3390/tropicalmed1010007
 42. Tian, A.L., Li, G.X., Elsheikha, H.M., Gardner, D.S., Zhang, X.Y., Dong, W., Yang, X.P., Luo, Y.Y., Li, H.L., Cong, W. and Zhu, X.Q. Seroepidemiology of *Toxoplasma gondii* infection in patients with liver disease in eastern China. *Epidemiology & Infection*, **145**(11), 2296-2302 (2017). DOI:10.1017/S0950268817001327
 43. Coss, S.L., Torres-Cornejo, A., Prasad, M.R., Moore-Clingenpeel, M., Grakoui, A., Lauer, G.M., Walker, C.M. and Honegger, J.R. CD4+ T cell restoration and control of hepatitis C virus replication after childbirth. *The Journal of Clinical Investigation*, **130**(2), 748-753 (2020). DOI:10.1172/JCI123623.
 44. Zadeh, A.E., Bamedi, T., Etemadi, S., Shahrakipour, M. and Saryazdipour, K. Toxoplasmosis as a complication of transfusion in hemodialysis patients. *Iranian Journal of Pediatric Hematology and Oncology*, **4**(1), 22 (2014). DOI:ncbi.nlm.nih.gov/pubmed/24734160
 45. Bayani, M., Mostafazadeh, A., Olliaee, F. and Kalantari, N. The Prevalence of *Toxoplasma gondii* in Hemodialysis Patients. *Iranian Red Crescent Medical Journal*, **15**(10), e5225 (2013). DOI:10.5812%2Fircmj.5225
 46. Ocak, S., Duran, N., Eskiocak, A.F. and Aytac, H., Anti-*Toxoplasma gondii* antibodies in hemodialysis patients receiving long-term hemodialysis therapy in Turkey. *Saudi Medical Journal*, **26**(9), 1378-1382 (2005). DOI:smj/26/9/1378.full.pdf
 47. Aufy, S.M., Mahgoub, A.M., Saadi, M.G. and Elmallawany, A. Serological detection of *Toxoplasma gondii* in chronic renal failure patients and renal transplant recipients. *Journal of the Egyptian Society of Parasitology*, **39**(3), 943-950 (2009). DOI:pubmed.ncbi.nlm.nih.gov/20120757
 48. Halle, M.P., Edjomo, A.M., Fouda, H., Djantio, H., Essomba, N. and Ashuntantang, G.E. Survival of HIV infected patients on maintenance hemodialysis in Cameroon: a comparative study. *BMC Nephrology*, **19**(1), 1-7 (2018). DOI:10.1186/s12882-018-0964-8
 49. Ahuja, T.S., Grady, J. and Khan, S. Changing trends in the survival of dialysis patients with human immunodeficiency virus in the United States. *Journal of the American Society of Nephrology*, **13**, 1889-1893 (2002). DOI:10.1097/01.ASN.0000019773.43765.BF

الأجسام المضادة للتوكسوبلازما والحمض النووي للتوكسوبلازما والأجسام المضادة لفيروس التهاب الكبد الوبائي وفيروس نقص المناعة البشرية في مرضى غسيل الكلى في بني سويف، مصر

هالة العسكري¹، أيمن البديري²، رأفت محمد شعبان³، موسى عبد الجواد إسماعيل⁴، مروة أحمد غيث¹، مصطفى شيمي⁵، أحمد إسماعيل⁶، شيماء سنوسي⁷ ومنى إبراهيم علي¹

- ¹ قسم الطفيليات الطبية - كلية الطب - جامعة بني سويف - بني سويف - مصر.
- ² قسم الأحياء الدقيقة - كلية الطب - جامعة الإمام عبد الرحمن بن فيصل - الدمام - السعودية وعلم الطفيليات الطبية - كلية الطب - جامعة القاهرة - مصر.
- ³ قسم الأمراض الحيوانية المنشأ - المركز القومي للبحوث - شارع التحرير - الدقي - الجيزة - مصر.
- ⁴ الطفيليات الطبية - القصر العيني - كلية الطب - جامعة القاهرة - مصر.
- ⁵ الميكروبيولوجي الطبي والمناعة - كلية الطب - جامعة بني سويف - بني سويف - مصر.
- ⁶ الطب الباطني - كلية الطب - جامعة بني سويف - بني سويف - مصر.
- ⁷ الصحة العامة وطب المجتمع - كلية الطب - جامعة بني سويف - بني سويف - مصر.

الملخص

تنتشر عدوى التوكسوبلازما (داء المقوسات) على الصعيد العالمي، في كل من البشر والحيوانات، ويعد داء المقوسات من بين الأمراض المشتركة الطفيلية الأكثر انتشاراً. ويعد غسيل الكلى عاملاً محفزاً لضعف المناعة الخلوية، مما يجعل المرضى أكثر عرضة للإصابة بمسببات الأمراض الانتهازية مثل التوكسوبلازما والفيروسات المنقولة بالدم. والتعرف على التواجد المصلي لداء المقوسات وفيروس التهاب الكبد الوبائي C وفيروس نقص المناعة البشرية والتواجد الجزيئي لمرض التوكسوبلازما داخل أمصال المرضى الذين يخضعون للغسيل الكلى تم جمع عينة مصل واحدة من 75 مريضاً جرى لهم غسيل الكلى. وتم البحث في عينات المصل عن الأجسام المضادة لـ التوكسوبلازما (IgG و IgM) وعن الأجسام المضادة لـ فيروس التهاب الكبد الوبائي C وفيروس نقص المناعة البشرية (HIV و HCV) باستخدام اختبار الإليزا (ELISA) و تم تعيين والتواجد الجزيئي لمرض التوكسوبلازما (Toxoplasma DNA) باستخدام اختبار تفاعل البلمرة المتسلسل (PCR). وأشارت نتائج هذه الدراسة إلى أن التوكسوبلازما تم اكتشافها بواسطة تعيين الأجسام المضادة والحمض النووي (IgG و IgM و PCR) بنسب (61.3%، 22.7%، و 1.3% على التوالي). وتم اكتشاف فيروس التهاب الكبد الوبائي (HCV Ab) في 14.6% من الحالات، وكانت العدوى المتزامنة لفيروس الكبد الوبائي مع التوكسوبلازما في 8 حالات (10.6%)، في حين لم يتم اكتشاف فيروس نقص المناعة البشرية (HIV Ab) في أي مريض بواسطة ELISA. خلص هذا البحث إلى أن التوكسوبلازما وفيروس التهاب الكبد C شائعان في مرضى الغسيل الكلوي مع معدل انتشار منخفض جداً للحمض النووي للتوكسوبلازما، ولذلك يفضل إجراء فحص منتظم للأمصال ضد مرض التوكسوبلازما وفيروس التهاب الكبد الوبائي في هؤلاء المرضى الذين يعانون من إجراء الغسيل الكلوي. وإن اتباع طريقة تعيين الإصابة للتوكسوبلازما في عينة مصل واحدة للكشف عن الحمض النووي في المرضى إيجابيين المصل للأجسام المضادة للطفيل، يمكننا أن نتجنب نقل داء المقوسات الحاد أو النشاط لمرضى الغسيل الكلوي ويتجنب العلاج غير الضروري لهم ضد التوكسوبلازما.

الكلمات الدالة: التوكسوبلازما، الأجسام المضادة، البلمرة المتسلسل، الإليزا، فيروس نقص المناعة البشرية، فيروس الكبد الوبائي.